

CAPRI comprises  
interactive maps to analyze results

## Background

of CAPRI Dynaspat

The Common Agricultural Policy is under constant development to meet the expectations of society linked to the multifunctional model of European agriculture. Tools as the "CAPRI" modeling system support rational policy design at European, national and regional level, help to link the European research community to policy makers, to inform the public regarding future developments in agriculture, and to analyze possible outcomes of changes in the Common Agricultural Policy.

Since 1999, where the first operational version of the "CAPRI" modeling system was available, a network of European researchers has constantly kept the tool up-to-date, improved and applied it to policy analysis. Many of these activities were made possible by funds provided by the EU framework programs.

The CAPRI-Dynaspat project, supported again by the EU, will help to maintain, improve and apply "CAPRI" as an important tool for agricultural policy impact analysis.

## Partners

of CAPRI Dynaspat

### University Bonn, Institute for Agricultural Policy

(IAP)

Nussallee 21, D-53229 Bonn, Germany  
contact: Wolfgang Britz – project co-ordinator  
++ 49 228 73-2502  
britz@agp.uni-bonn.de

### National University of Ireland

(NUI),

Faculty of Commerce, Department of Economics  
University Road, Galway, Ireland  
contact: Eoghan Garvey  
++35 391 52 44 11-3105  
eoghan.garvey@nuigalway.ie

### Joint Research Centre, Ispra Site

(JRC)

Via E. Fermi 1, I-21020 Ispra (VA), Italy  
contact: Adrian Leip  
+39 0332 78-6327  
Adrian.leip@jrc.it

### Research Institute for Agricultural Economics

(VUZE)

Manesova 75, CZ-120 58 Praha 2, Czech Republic  
contact: Tomas Ratinger  
++222 000 420  
ratinger@vuze.cz

### Forschungsanstalt für Agrarwirtschaft und Landtechnik

(FAT)

Taenikon, CH-8356 Ettenhausen, Switzerland  
contact: Gabriele Mack  
++41 52 368-3215  
gabriele.mack@fat.admin.ch

### EuroCARE GmbH

Rheinallee 56, D-53179 Bonn, Germany  
contact: Heinz-Peter Witzke  
Tel: ++49 228 73-2916  
peter.witzke@eurocare-bonn.de

Disclaimer: Although this describes an EU-funded project, it does not necessarily reflect the European Commission's views.



Scientific officer:  
Hans-Joerg Lutzeyer  
Hans-Joerg.Lutzeyer@cec.eu.int



## CAPRI-Dynaspat

Common Agricultural Policy  
Regional Impact  
The Dynamic and Spatial Dimension

Specific Targeted Research Project (STREP)  
under the Sixth EU Framework Programme,  
project No.: 501981  
3/2004-3/2007

**CAPRI comprises interactive HTML tables to analyze results**

Region / Economic Area	Agenda 2000	Agenda reformer cap (2000)	Agenda reformer cap (2002)	Agenda reformer cap (2004)
EU27 (excluding export for price)	42701.00	47500.00	47500.00	47500.00
Member states	42000.00	46500.00	46500.00	46500.00
EU25	41500.00	46000.00	46000.00	46000.00
EU15	41000.00	45500.00	45500.00	45500.00
EU10	4000.00	4500.00	4500.00	4500.00
EU8	3500.00	4000.00	4000.00	4000.00
EU2	500.00	500.00	500.00	500.00
EU1	500.00	500.00	500.00	500.00
EU12	500.00	500.00	500.00	500.00
EU13	500.00	500.00	500.00	500.00
EU14	500.00	500.00	500.00	500.00
EU15	500.00	500.00	500.00	500.00
EU16	500.00	500.00	500.00	500.00
EU17	500.00	500.00	500.00	500.00
EU18	500.00	500.00	500.00	500.00
EU19	500.00	500.00	500.00	500.00
EU20	500.00	500.00	500.00	500.00
EU21	500.00	500.00	500.00	500.00
EU22	500.00	500.00	500.00	500.00
EU23	500.00	500.00	500.00	500.00
EU24	500.00	500.00	500.00	500.00
EU25	500.00	500.00	500.00	500.00
EU26	500.00	500.00	500.00	500.00
EU27	500.00	500.00	500.00	500.00
EU28	500.00	500.00	500.00	500.00
EU29	500.00	500.00	500.00	500.00
EU30	500.00	500.00	500.00	500.00
EU31	500.00	500.00	500.00	500.00
EU32	500.00	500.00	500.00	500.00
EU33	500.00	500.00	500.00	500.00
EU34	500.00	500.00	500.00	500.00
EU35	500.00	500.00	500.00	500.00
EU36	500.00	500.00	500.00	500.00
EU37	500.00	500.00	500.00	500.00
EU38	500.00	500.00	500.00	500.00
EU39	500.00	500.00	500.00	500.00
EU40	500.00	500.00	500.00	500.00
EU41	500.00	500.00	500.00	500.00
EU42	500.00	500.00	500.00	500.00
EU43	500.00	500.00	500.00	500.00
EU44	500.00	500.00	500.00	500.00
EU45	500.00	500.00	500.00	500.00
EU46	500.00	500.00	500.00	500.00
EU47	500.00	500.00	500.00	500.00
EU48	500.00	500.00	500.00	500.00
EU49	500.00	500.00	500.00	500.00
EU50	500.00	500.00	500.00	500.00
EU51	500.00	500.00	500.00	500.00
EU52	500.00	500.00	500.00	500.00
EU53	500.00	500.00	500.00	500.00
EU54	500.00	500.00	500.00	500.00
EU55	500.00	500.00	500.00	500.00
EU56	500.00	500.00	500.00	500.00
EU57	500.00	500.00	500.00	500.00
EU58	500.00	500.00	500.00	500.00
EU59	500.00	500.00	500.00	500.00
EU60	500.00	500.00	500.00	500.00
EU61	500.00	500.00	500.00	500.00
EU62	500.00	500.00	500.00	500.00
EU63	500.00	500.00	500.00	500.00
EU64	500.00	500.00	500.00	500.00
EU65	500.00	500.00	500.00	500.00
EU66	500.00	500.00	500.00	500.00
EU67	500.00	500.00	500.00	500.00
EU68	500.00	500.00	500.00	500.00
EU69	500.00	500.00	500.00	500.00
EU70	500.00	500.00	500.00	500.00
EU71	500.00	500.00	500.00	500.00
EU72	500.00	500.00	500.00	500.00
EU73	500.00	500.00	500.00	500.00
EU74	500.00	500.00	500.00	500.00
EU75	500.00	500.00	500.00	500.00
EU76	500.00	500.00	500.00	500.00
EU77	500.00	500.00	500.00	500.00
EU78	500.00	500.00	500.00	500.00
EU79	500.00	500.00	500.00	500.00
EU80	500.00	500.00	500.00	500.00
EU81	500.00	500.00	500.00	500.00
EU82	500.00	500.00	500.00	500.00
EU83	500.00	500.00	500.00	500.00
EU84	500.00	500.00	500.00	500.00
EU85	500.00	500.00	500.00	500.00
EU86	500.00	500.00	500.00	500.00
EU87	500.00	500.00	500.00	500.00
EU88	500.00	500.00	500.00	500.00
EU89	500.00	500.00	500.00	500.00
EU90	500.00	500.00	500.00	500.00
EU91	500.00	500.00	500.00	500.00
EU92	500.00	500.00	500.00	500.00
EU93	500.00	500.00	500.00	500.00
EU94	500.00	500.00	500.00	500.00
EU95	500.00	500.00	500.00	500.00
EU96	500.00	500.00	500.00	500.00
EU97	500.00	500.00	500.00	500.00
EU98	500.00	500.00	500.00	500.00
EU99	500.00	500.00	500.00	500.00
EU100	500.00	500.00	500.00	500.00

**What is CAPRI?**

CAPRI is the acronym for “Common Agricultural Policy Regional Impact”, a “multi-purpose” economic modeling system for EU’s agriculture which allows analysing:

- Market policies (administrative prices/ tariffs/preferential agreements, subsidized exports)
- Premium systems/quotas/set-aside regimes
- Environmental policies
- Changes in exogenous drivers (population/ inflation/exchange rates/consumption behavior/technical progress)

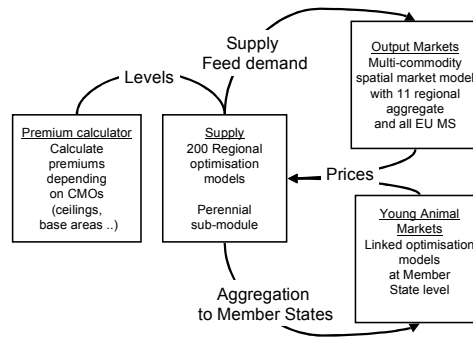
Regarding:

- Supply/demand/trade flows at global scale
- Hectares/herd sizes/yields/input use, income and environmental indicators at regional level
- Producer & consumer prices, welfare and budget effects at Member State level

CAPRI has been developed since 1997, with support by the EU commission. Important applications were:

- the Agenda 2000 reform package of the CAP (1999)
- CAP milk market liberalization options (2000)
- the MTR reform package of the CAP (2002)
- possible outcomes of the WTO Doha round (2003)
- tradable permits for Green House Gases (2003)
- the Luxembourg Compromise of the CAP (2003)
- insurance options for Food & Mouth Disease (2004)

**Link of modules in the CAPRI modeling system**



**Objectives of CAPRI Dynamspat**

Yearly update of and reference run with the CAPRI modeling system

Yearly policy simulations for DG-AGRI based on CAPRI

Development and validation of a recursive-Dynamic version of the CAPRI modeling system

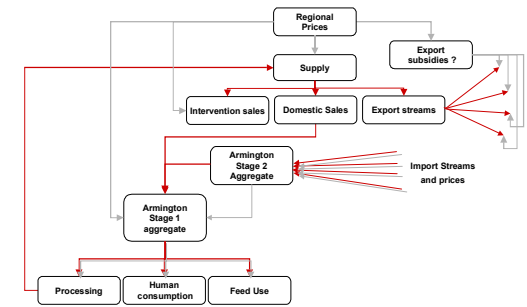
Development of an employment module for CAPRI

Development of an agricultural energy indicator for CAPRI

Development of links for CAPRI to GIS and a process based model for Green House Gas emissions from agriculture, development of a landscape indicator

East expansion of CAPRI

**Structure of the global trade module of CAPRI**



**Expected Results of CAPRI Dynamspat**

An improved operational up-to-date and validated CAPRI modeling system for ex-ante analysis of the CAP regarding the multi-functional role of agriculture

A network of European researchers from EU 25 applying and maintaining CAPRI

Regular support of DG-AGRI in policy impact analysis

Scientific findings regarding the design of large-scale agricultural modeling systems and in linking on a Europe wide scale economic with bio-physical models